

The Gibson Microscope Slide Collection

*David Sigeo
in collaboration with Stephanie Seville
and Peter Mohr*

**Manchester Museum of
Medicine and Health (MMH)**

Cragside – Northumberland
National Trust



*Originally the home of
Lord Armstrong*

Lord Armstrong's Office - Cragside

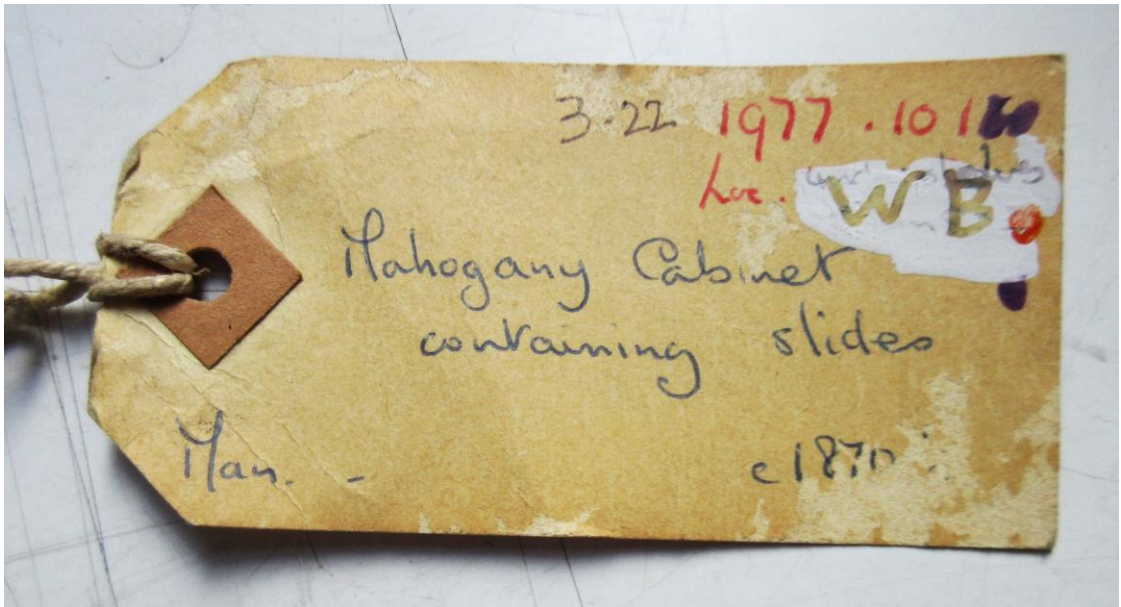
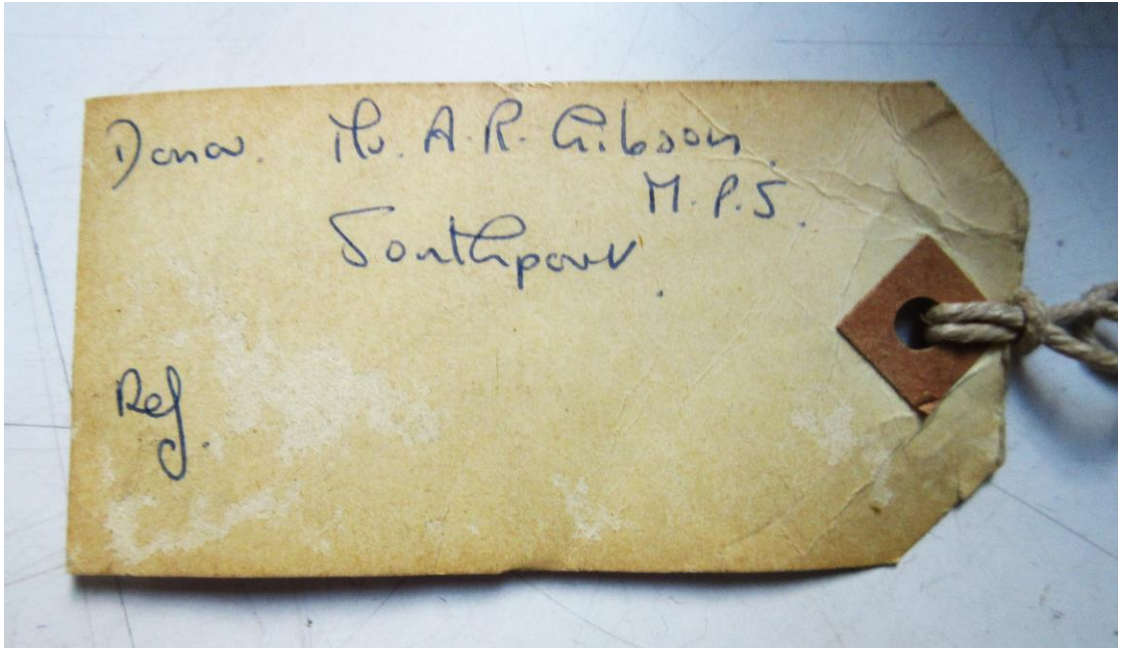


The Gibson Microscope Slide Collection



Mahogany Cabinet: - 25 Trays
- 681 Slides

Donor: Mr. A.R. Gibson. Southport. 1977





Tray 5

Glass sealed with tape

Glass Slide 5.4

Wooden slide - opaque



Tray 5

LABELLING OF SLIDES

- Slide 5.4

General description
microfungus

Latin name
Centhospora phoicidoidi

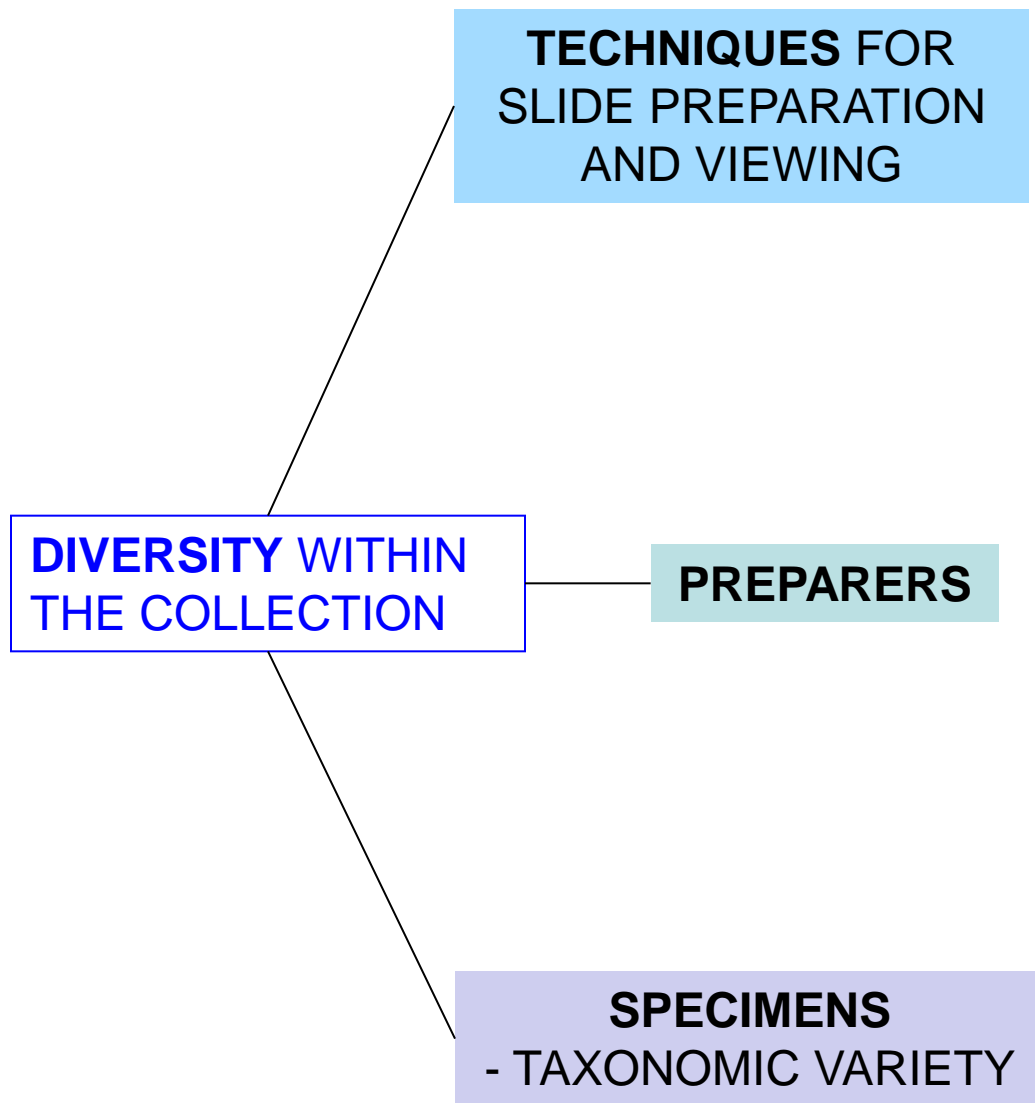
Location - *Conway*

Specimen information
on Holly leaf

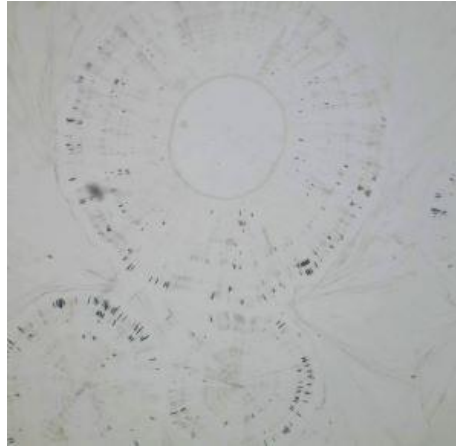
Date *30/8/92*

microfungus
Centhospora
Phoicidoidi
(Conway)
on Holly leaf
30/8/92
GEORGE WHITEHOUSE.

Slide preparer
George Whitehouse



TECHNIQUES



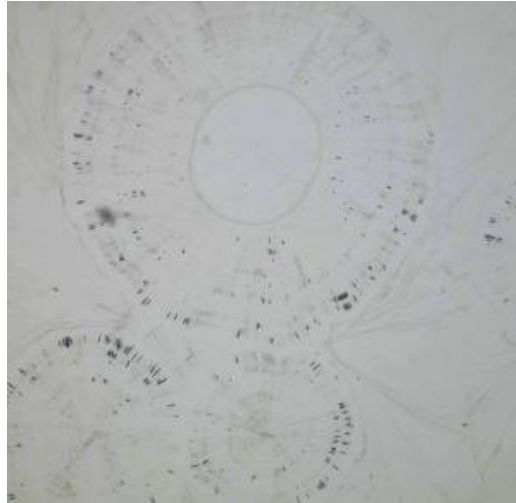
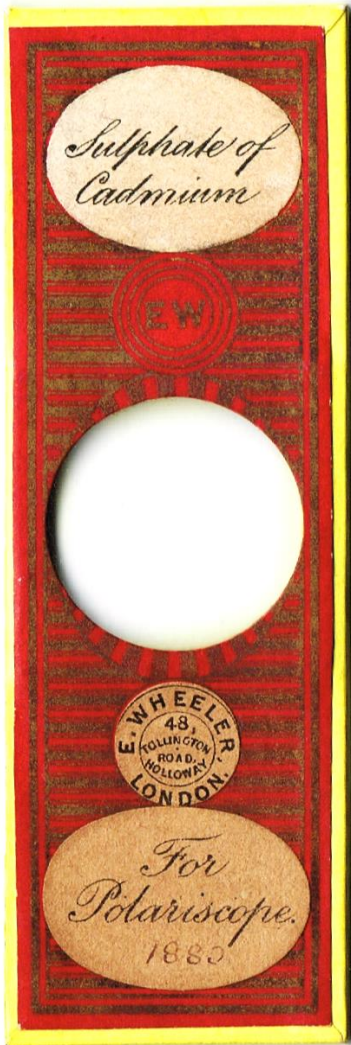
BRIGHT FIELD

INSTRUCTIONS FOR
VIEWING

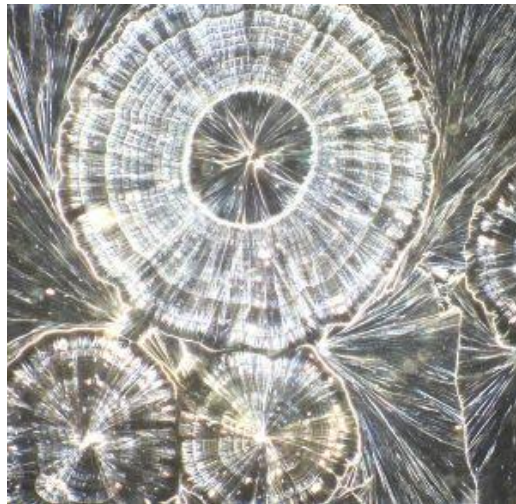
For Polariscopes

Inorganic specimen – Sulphate of Cadmium

TECHNIQUES



**Bright
Field**



**Phase
contrast**

Inorganic specimen – Sulphate of Cadmium

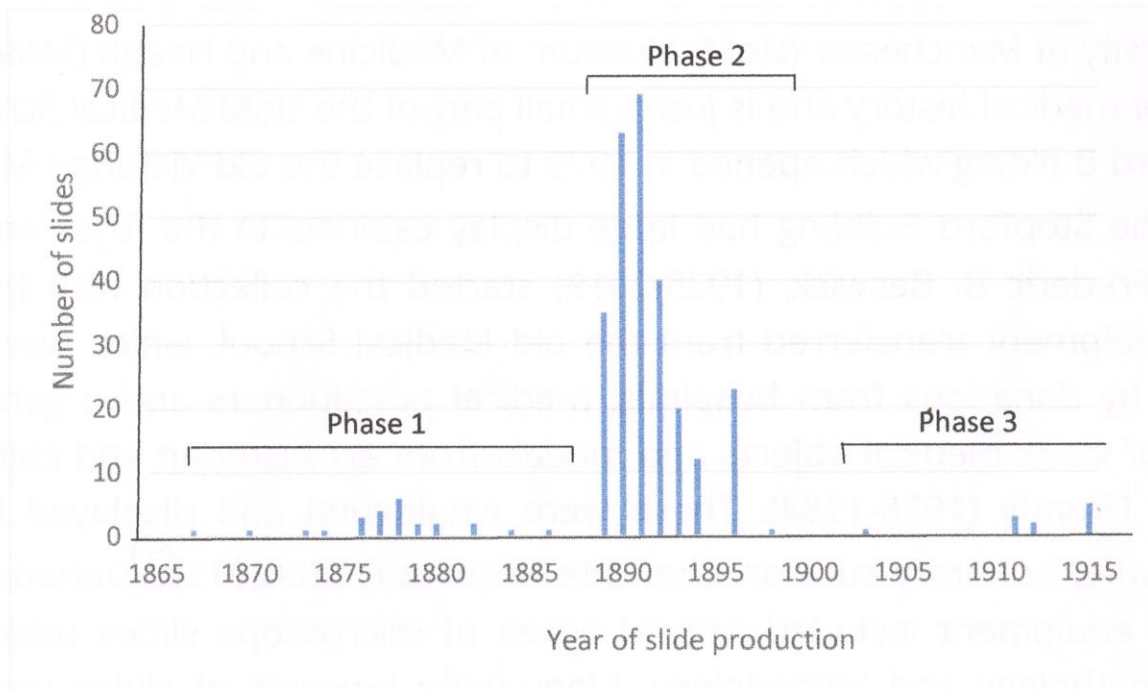
PREPARERS

- All slides in collection obtained from commercial suppliers - 'Preparers'
- 90% of slides had identity of supplier - 35 named suppliers in total
- Major group of suppliers based in North West

F.J. Baidon – Southport
Contributed 155 slides (quarter of the collection) between 1870-1926.

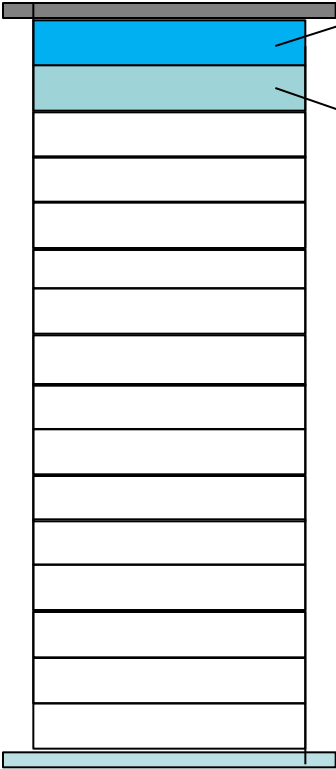
PREPARERS

Dates of Preparation



- Dates range from 1867 – 1926
- About 90% of collection in 1890s

SPECIMEN DIVERSITY

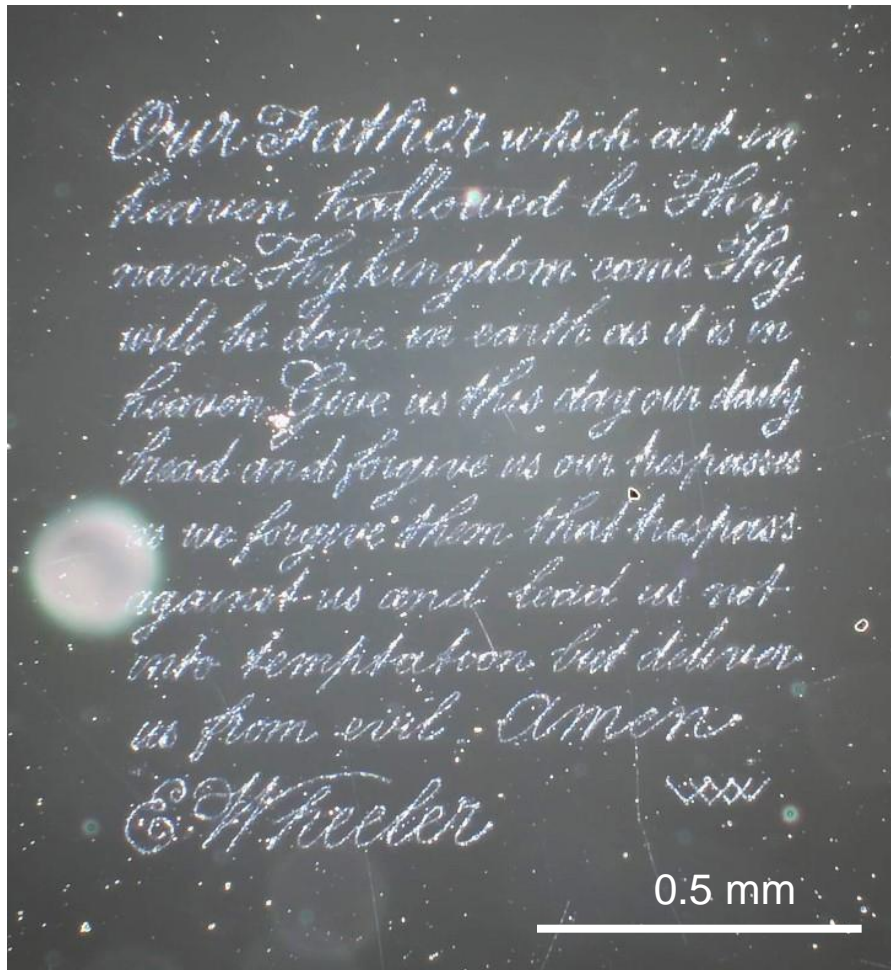


Tray 1. Inorganic specimens

Tray 2. Miscellaneous novelty items

- Lords prayer
- Bank note lettering
- Vases of flowers

**SLIDE
CABINET**

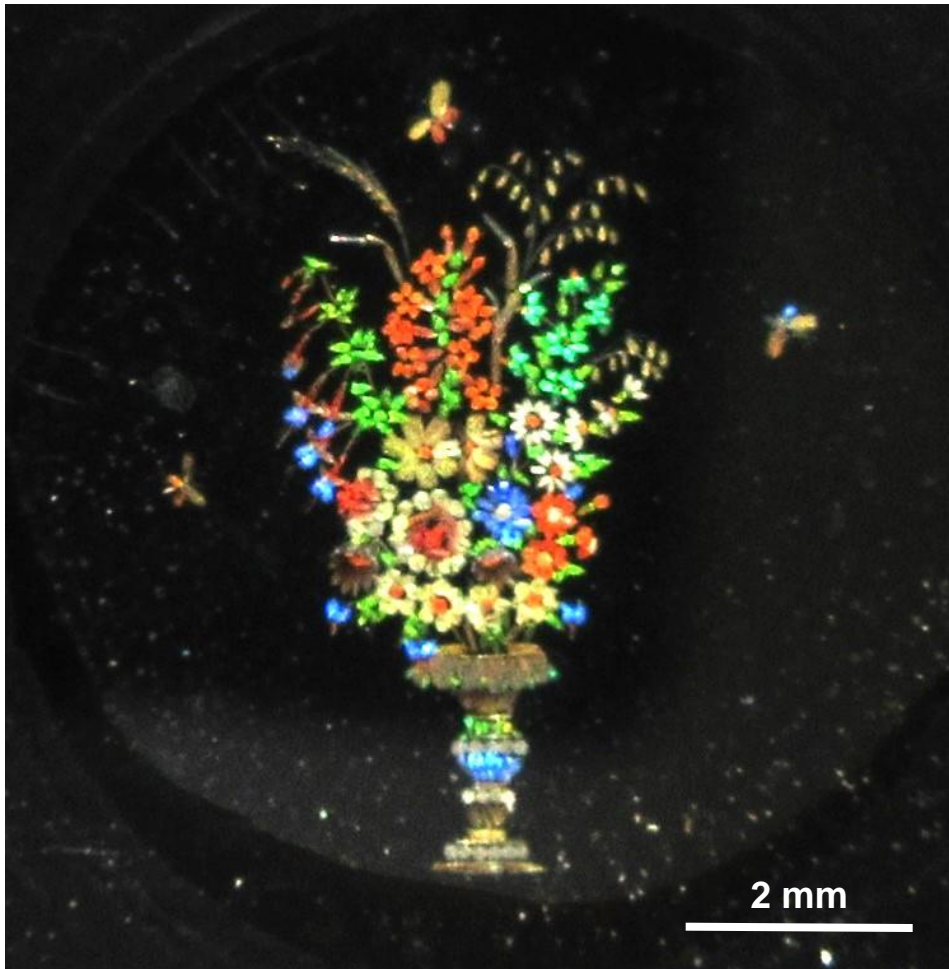


Slide 2.8 View of 'The Lord's Prayer'

Phase contrast
image

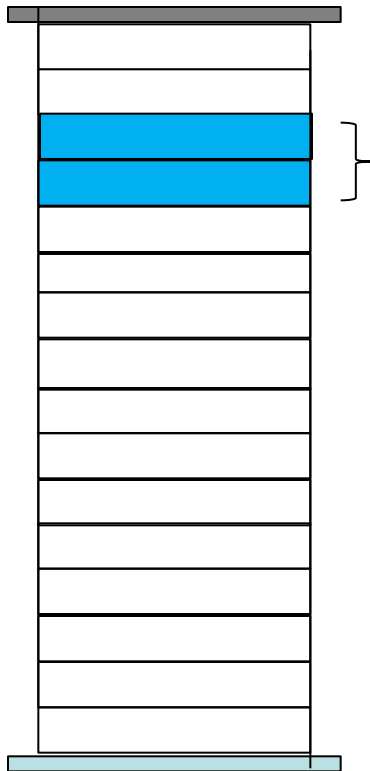
← bottom of slide

Slide 2.28 Butterfly scales arranged as a bouquet.



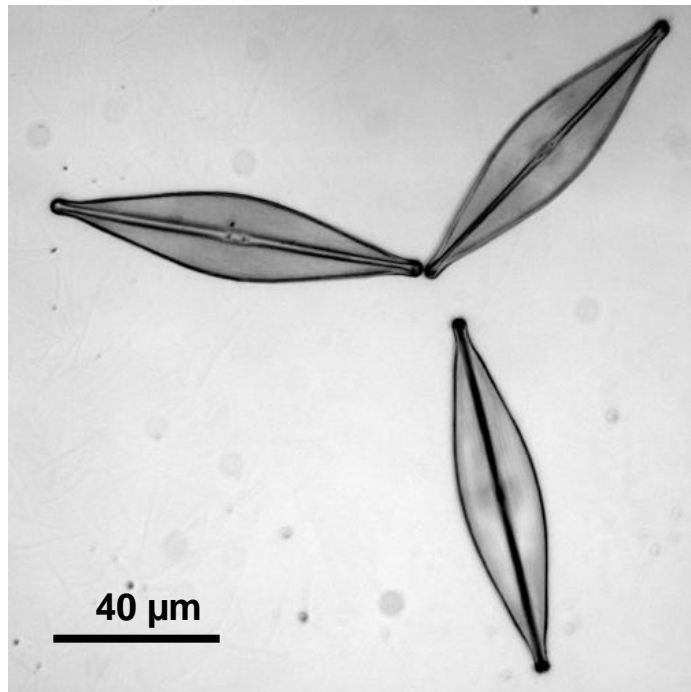
Opaque slide.
Harold Dalton preparer. London & Paris

SPECIMEN DIVERSITY



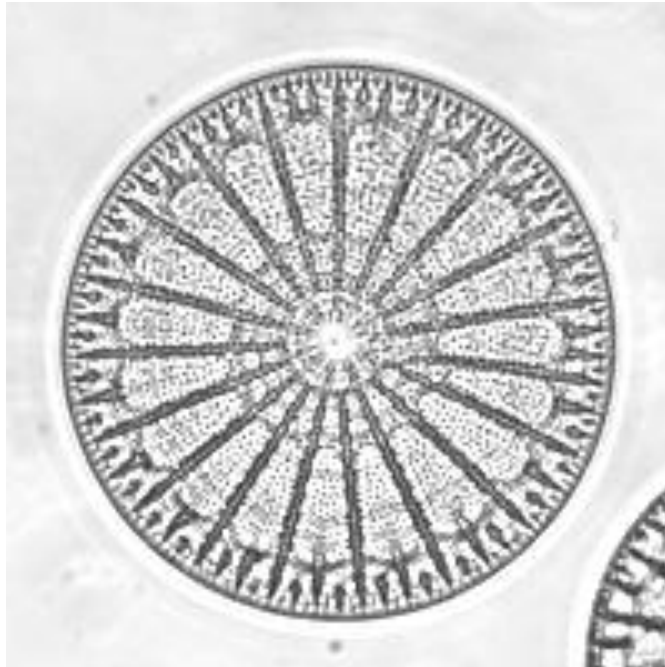
Trays 3 & 4. Diatoms

SLIDE
CABINET

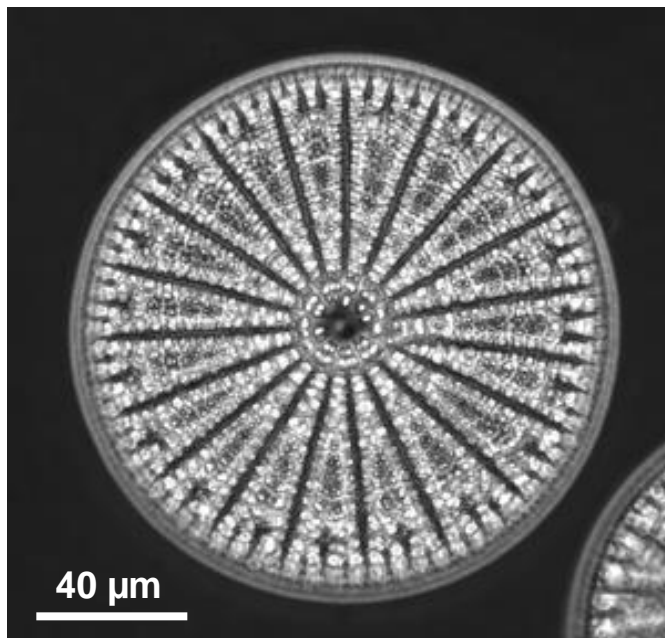


Slide 4.4 *Navicula eujudata*
Arrangement of three pennate
diatoms. Bright field image

Slide 3.8 *Arachnoidiscus ehrenbergei*
Centric Diatom



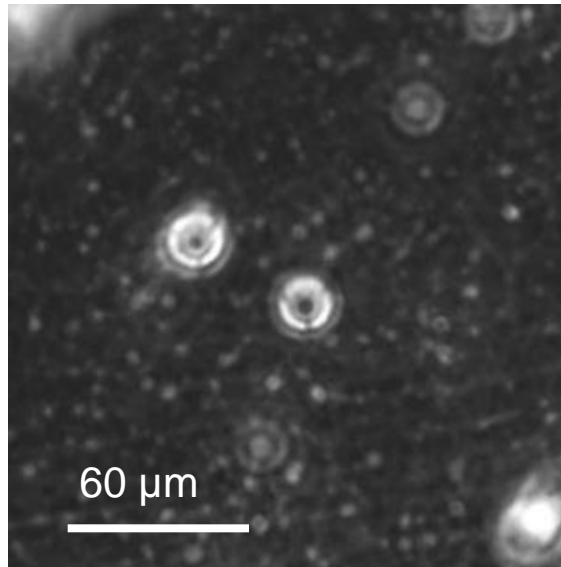
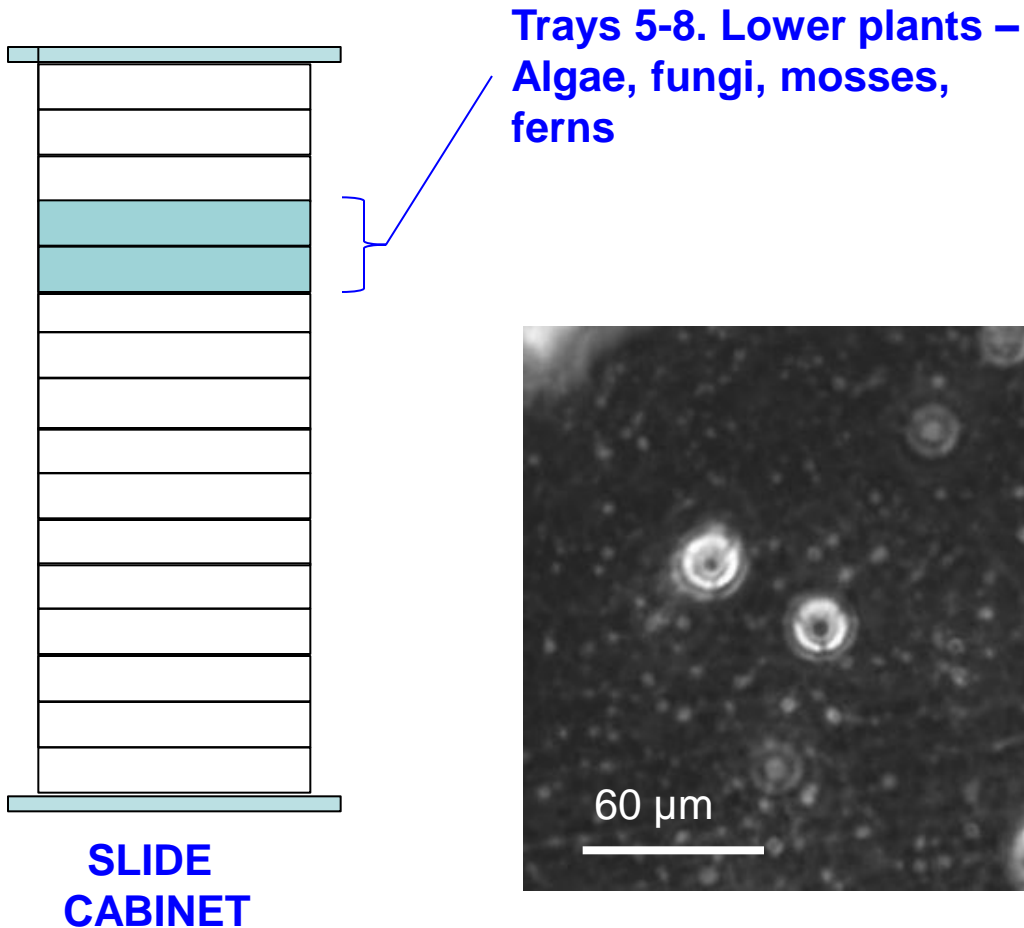
**Bright
Field**



**Phase
Contrast**

Supplier – S.L.

SPECIMEN DIVERSITY



Slide 6.11 Protococcus pluvialis

Unicellular green alga

Phase contrast

The smallest organism in the slide collection



Slide 6.8 *Colony of the filamentous blue-green alga Gleotrichia natans.*

Supplier: G.W. Chaster

Phase-contrast detail of individual filaments

60 μm



SPECIMEN DIVERSITY



**SLIDE
CABINET**

**Trays 9-12 Higher plants –
*Anatomical specimens***



**Slide 11.3 Section of Mareostail
stem. *Hippuris vulgaris***

Supplier: W.Watson & Sons
Scanned image

2mm

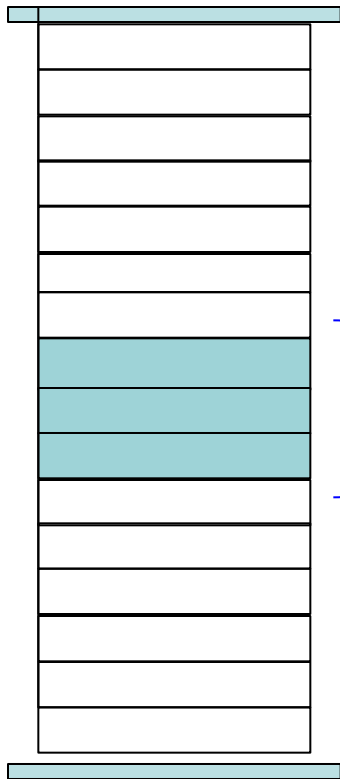


0.5 cm

Slide 12.1 Cornflower seeds
- *Cyanus Major*

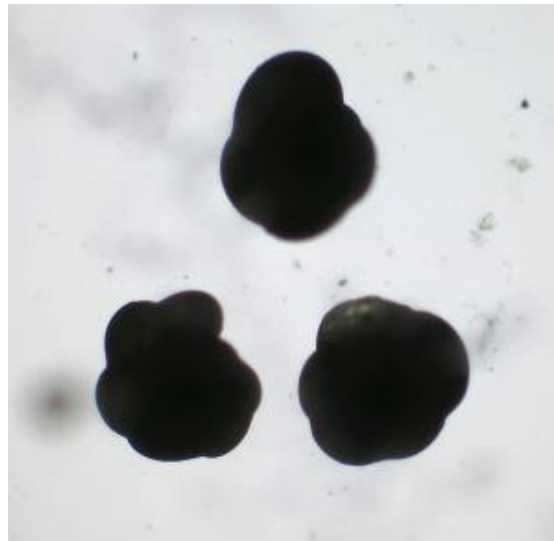
Dry preparation. 4/90

SPECIMEN DIVERSITY



**SLIDE
CABINET**

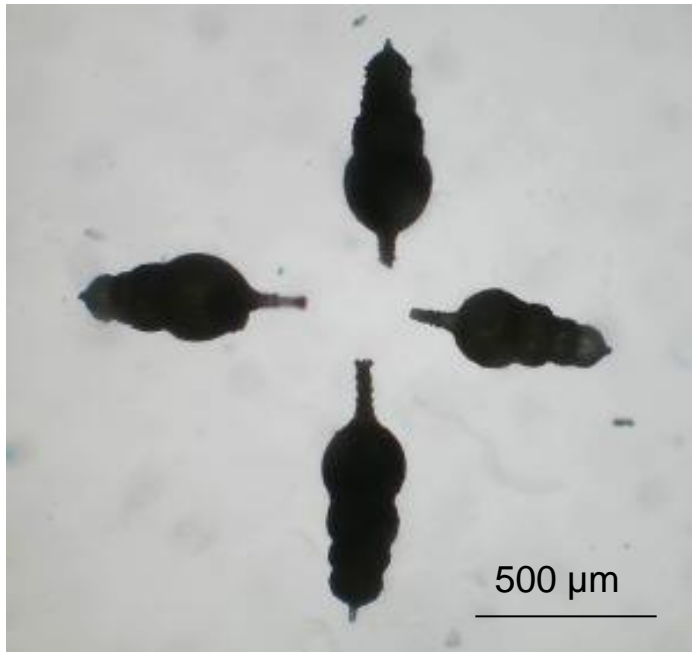
**Trays 13-17 Foraminifera
- Marine protozoa**



**Slide 14.15 Three examples
of *Trochammina inflata***

Phase contrast 500 μ m

Supplier: G.W. Chaster. 1891



Bright field

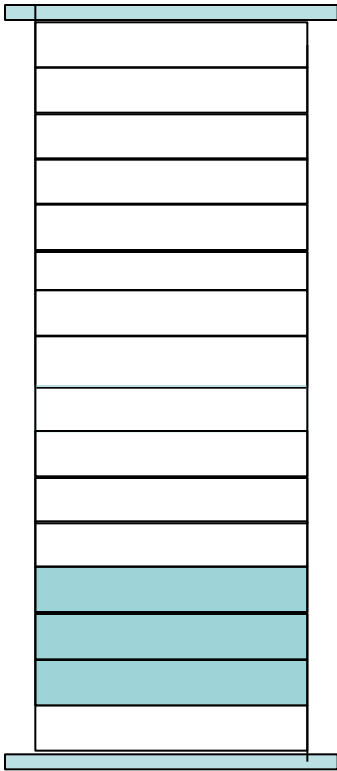


Phase
contrast

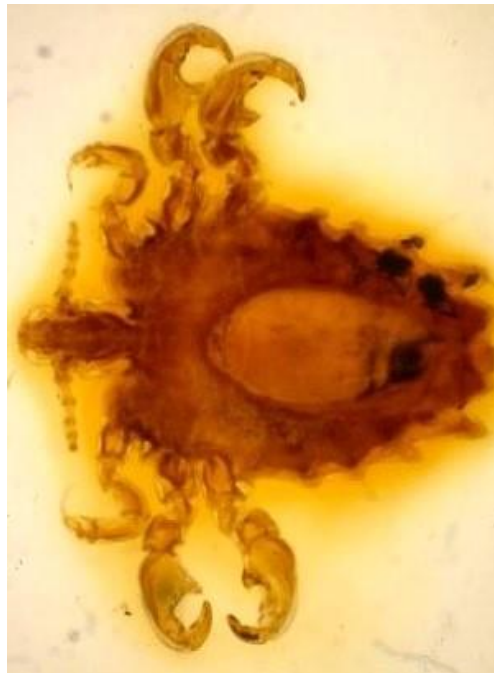
Slide 15.11 *Nodosaria scalaris*
- tetrad of four organisms
Supplier J.F.Baildon

SPECIMEN DIVERSITY

Trays 20 - 24 Parasitic insects



**SLIDE
CABINET**



Slide 20.2 *Phthirus inguinalis*

Human Louse

Phase contrast

1mm



Supplier: F.J. Baidon 1911



Bright
field



Phase
contrast

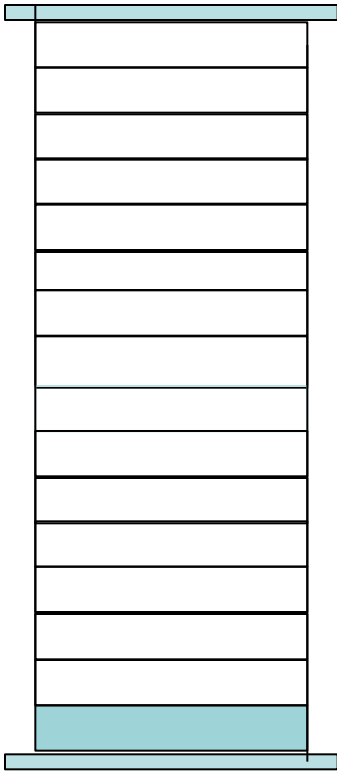
Slide 20.9 *Lipeurus variabilis* Female
Bird Louse (domestic fowl)

Chewing ectoparasite

1 mm

SPECIMEN DIVERSITY

Tray 25 Molluscs



SLIDE
CABINET



Slide 25.9 Radula of
Dentalium cutalis
Small snail
Bright field

1mm

LIST OF SLIDES – 25 TRAYS

Cabinet Label: 1977.101 Mahogany cabinet containing slides. Donor Mr. A.R.Gibson M.P.S. Southport
 Notice: A collection of slides and specimens dating from 1876

Tray 3 Slides 3.1 – 3.30

All specimens are diatoms

SLIDE NUMBER	IDENTIFICATION	BACKGROUND INFORMATION	DERIVATION
3.1	<i>Amphijuvia alata</i>		S.L.
3.2	<i>Nitschia amphioxys</i>	CB 5/96	F.J.BAILDON, SOUTHPORT
3.3	<i>Campylodiscus clypeus</i>	1891	ROBERT JONES
3.4	<i>Epithemia turgida</i>	Morris County USA 19/3/94	GEORGE WHITEHOUSE
3.5	<i>Coscinodiscus</i>	Southport 1890	ROBERT JONES
3.6	<i>Triceratium favus</i>	Southport CB 4/89	G.W.CHASTER
3.7	<i>Triceratium var. septangulatum</i>		W.WATSON & SONS, 313 HIGH HOLBORN, LONDON
3.8	<i>Arachnodiscus ehrenbergii</i>		S.L.
3.9	<i>Triceratium var. septangulatum</i>		ROBERT JONES
3.10.	<i>Helionella loeuwenhochii</i>		S.L.
3.11.	<i>Coscinodiscus</i>	Southport 1890	ROBERT JONES
3.12.	<i>Coscinodiscus</i> sp.	Southport	ROBERT JONES
3.13.	<i>Biddulphia aurita</i>		
3.14.	<i>Gomphonema germinatum</i>	C.B. 8/9	ROBERT JONES
3.15.	<i>Triceratium</i>	Föhn Island 9/96	ROBERT JONES
3.16.	<i>Coscinodiscus</i>	Southport	ROBERT JONES
3.17.	<i>Isthmia enervis</i>		ROBERT JONES
3.18.	<i>Coscinodiscus</i>	Southport 1892	ROBERT JONES
3.19.	Diatomaceae [no latin name]	From So. Pacific Ocean	W.WATSON & SONS, 313 HIGH HOLBORN, LONDON
3.20.	<i>Navicula praetexta</i>	Mounted in Stylax	W.WATSON & SONS, 313 HIGH HOLBORN, LONDON
3.21.	Diatoms [no latin name]	Challenger Expedition No. 157 Mar 3 1874 Depth 1950 fath Lat. 55.55S Long. 108.75E	F.J.BAILDON, SOUTHPORT
3.22.	<i>Synedra superba</i>		G.W.CHASTER
3.23.	<i>Aulacodiscus johnsonii</i>	5/96.	F.J.BAILDON, SOUTHPORT
3.24.	<i>Synedra danica</i>	C.B. 1894	GEORGE WHITEHOUSE
3.25.	<i>Trachnoidiscus japonicus</i>		W.WATSON & SONS, 313 HIGH HOLBORN, LONDON
3.26.	<i>Coscinodiscus robustus</i>		S.L.
3.27.	<i>Aulacodiscus margaritaceu</i>		W.WATSON & SONS, 313 HIGH HOLBORN, LONDON
3.28.	<i>Aulacodiscus kittonii</i>	Eupodiscea	ROBERT JONES
3.29.	<i>Campylodiscus spiralis</i>	C.B. 4/91	ROBERT JONES
3.30.	<i>Coscinodiscus</i>	CB Decr. 18.91 Southport Pier	ROBERT JONES

DATA SHEET

MUSEUM OF MEDICINE AND HEALTH
MANCHESTER UNIVERSITY

LABEL: ZOOLOGY *Carychium muriminutum*

Supplier:

Acquisition Slide Cabinet: 1977.101 Tray 25

Slide reference **DS25.4**

Background information: POLARISCOPE with *Selenite*

Stg. Agt. none Mtg. Agt. *Canad. Bals.*



BRIGHT
FIELD



PHASE -
CONTRAST

— 1 mm

